



Idaho Falls School District Executive Dashboard

The Customer

The Idaho Falls School District is a public school district located in southeastern Idaho, serving the city of Idaho Falls and surrounding areas. Established in 1901, the district has a long history of providing quality education to students in the region. Today, it is the largest school district in eastern Idaho, serving over 10,000 students in 16 schools.

The Situation

The Idaho Falls School District wanted assistance in developing a student and school data dashboard that could provide a fresh and objective view of the overall student performance, the district's performance, and summarized administrative data. They needed a tool to help them analyze, organize, and display data to make informed decisions about student performance and school management.

The Solution

RBDC and BYU-Idaho provided consulting services to the Idaho Falls School District to develop a student and school data dashboard. The consulting team analyzed, organized, and displayed data on the dashboard, as requested by the client. The team used Power BI to design reports and create dashboards that provided insights into student achievement, enrollment and attendance, and demographic data summaries linked to enrollment and attendance by subpopulations. The team also displayed financial data on the dashboard, including revenues by period, budget to actual, percent spent by category, and AP file as presented to the Board by the month.

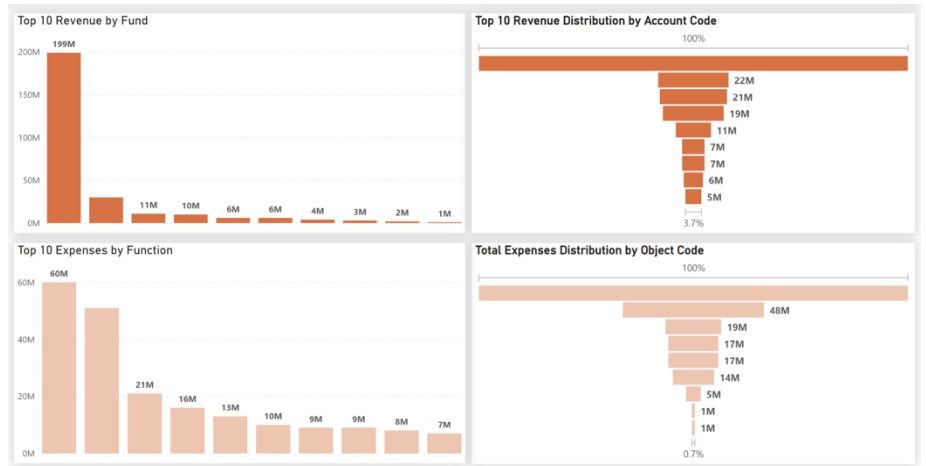


Focus

- The development of the student and school data dashboard provided the Idaho Falls School District with a tool that enables them to make data-driven decisions about student performance and school management. The following data was included in the final dashboard:
 - Student performance on ISAT/SAT broken down by different test subjects
 - Student achievement insights
 - Enrollment and attendance tracking
 - Demographic data summaries
 - Financial data display
 - Revenues by period tracking
 - Budget to actual comparisons
- By analyzing and organizing data, and displaying it on a user-friendly dashboard, the consulting team provided the district with valuable insights that will help improve student performance and school management.
- The RBDC and BYU-Idaho's consulting services have provided the Idaho Falls School District with long-term benefits that will enhance their decision-making capabilities for years to come.

Finance Overview

The finance overview page provides a detailed view of the district's financial performance and status. It displays revenue data by period, comparing actual revenue to budgeted amounts, as well as the percentage of funds spent by category. This page is a valuable resource for district administrators to track financial performance and ensure that resources are being allocated effectively and efficiently. By having access to this information, the district can make informed

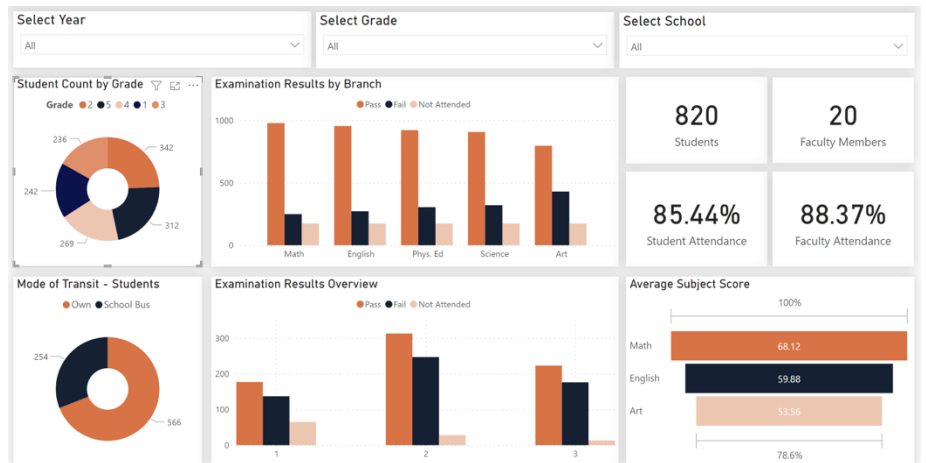


*Charts do not represent actual data

financial decisions and ensure that funds are being used to support student learning and achievement.

Student Overview

The student overview page provides a comprehensive snapshot of student performance and achievement data. It includes reports on student achievement, such as state assessment scores and grading period data, as well as enrollment and attendance data. The page also summarizes demographic data by subpopulations, providing insight into how different groups of students are performing and where additional support may be needed. The student



*Charts do not represent actual data

overview page is a valuable tool for teachers and administrators to identify areas of strength and weakness in student performance and make data-informed decisions to improve outcomes.